

NATURAL WICKER Construction / Care



NATURAL WICKER

HAS BEEN USED IN HOME SETTINGS FOR MORE THAN ONE CENTURY.

First quality materials, meticulous details, combined with hand-craftsmanship make WeatherMaster by Laneventure Natural Wicker products a *NATURAL* top quality choice.

WeatherMaster®
by Laneventure®
www.laneventure.com

CONSTRUCTION

Each piece starts with rattan, a beautiful and natural material used for both interior and exterior furniture.

- **Weather-Resistant Weaves**
 - 100% natural mature rattan vine
 - Hardest and strongest grown
 - Will not split, crimp or exhibit loose fibers
 - Entirely hand woven
- **Protected With Exclusive 5 Step Finish System**
 - Designed to seal and protect rattan from exposure to the elements
 - 5 step acrylic based latex finish system: Outdoor resins similar to today's premium outdoor paints
 - Wicker is fully submersed and sprayed for better coverage, color and protection.
- **Patented Drain Through Upholstery System**
 - Drain through chamber
 - Quick drying time
 - Easier cleaning.
- **Hundreds of Outdoor Designer Fabrics,**
 - Best selection in the marketplace
 - Beautiful, durable and easy to clean.
 - Among the most fade-resistant of materials
- **IN ADDITION: Sherwin-Williams® Paint Colors**
 - 900+ Sherwin-Williams® Paint Colors

CARE & MAINTENANCE

Natural Wicker can be used in a variety of settings: porches, sunroom and other protected settings. Maintenance depends on the degree of exposure to the elements, such as sunlight, moisture, and impurities from the environment. Finish and routine maintenance will protect furniture, increasing product life and providing heirloom quality furniture.

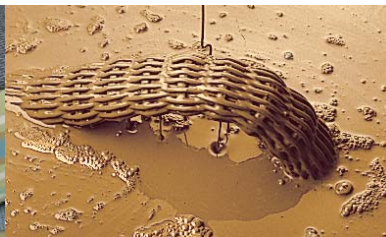
- **Protecting**
 - Inspect each season
 - Requires periodic maintenance as it ages, to keep its like new appearance.
 - Recommended use in protected settings from exposure. to sun & extreme elements.

Depending on exposure and severity of elements in your location at some point you may need to repaint your WeatherMaster frames. We recommend Sherwin Williams® A-100 Gloss House and Trim Paint.

- **Cleaning**
 - Frames: Spot wash with soft cloth, mild soap and water. Rinse well and air dry.
 - Fabrics: Spot wash with mild soap and warm water, rinse and air dry, or simply hose down regularly.
- **Nicks, Scrapes or Hairline Cracks**
 - Touch up immediately with WeatherMaster touch up products available through your WeatherMaster retailer.



Patented Drain Through Upholstery System



Exclusive 5 Step Finish System



Sealed and Finished Weather-Resistant Weaves